

**Tillbridge Solar Project
EN010142**

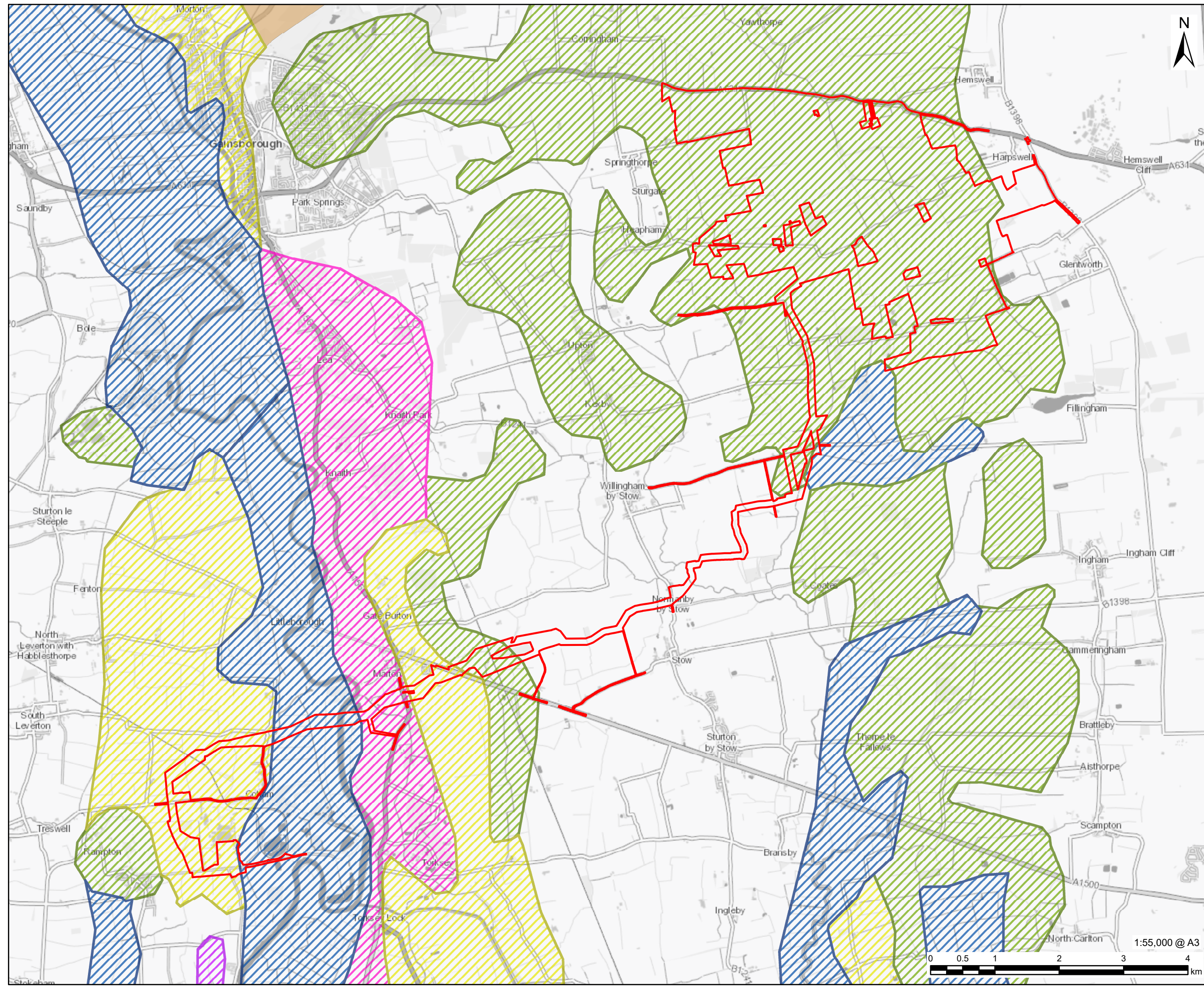
**Volume 6
Environmental Statement
Figure 10-4: Superficial Geology and Aquifer
Status
Document Reference: EN010142/APP/6.3**

**Regulation 5(2)(a)
Infrastructure Planning (Applications: Prescribed Forms and
Procedure) Regulations 2009**

**April 2024
Revision Number: 00**

tillbridgesolar.com

Revision: 0 Drawn: HW Checked: LL Approved: CW Date: 2024-02-06
Filename: I:\a.ecom\com\is\EMEAL\London-UK\LON06\Legacy\UKLON06\PPFSW001-V\DPPE\Library\GIS_DATA\Projects\Greta III\Layout\Tillbridge Solar\ES_Chapter_10 - Water\231123_TillbridgeSolar_ES_Figure10-4_SuperficialGeologyAndAquiferStatus.mxd



PROJECT
Tillbridge Solar Project

CLIENT
Tillbridge Solar Limited

CONSULTANT
Aldgate Tower
2, Leman Street
London, E1 8FA
United Kingdom
T +44-0207-645-2000

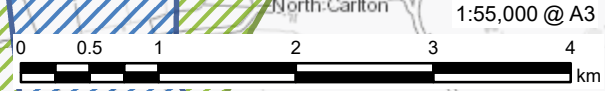
- LEGEND**
- Order limits
 - Superficial Geology**
 - Alluvium-Clay, Silt and Sand - Sec A Aquifer
 - Blown Sand-Sand
 - Glacial Sand and Gravel - Sec A Aquifer
 - Peat-Peat - Unproductive Strata
 - River Terrace Deposits-Sand and Gravel - Sec A Aquifer
 - Till-Diamicton - Sec Undifferentiated Aquifer

NOTES
Contains Ordnance Survey Data © Crown Copyright and database right 2023. Reproduced with the permission of the British Geological Survey © UKRI 2023. All Rights Reserved.

ISSUE PURPOSE
DCO Submission
PROJECT NUMBER
60677969

FIGURE TITLE
Superficial Geology and Aquifer Status

FIGURE NUMBER
Figure 10-4



This drawing has been prepared for the use of AECOM's client. It may not be used, modified, reproduced or relied upon by third parties, except as agreed by AECOM or as required by law. AECOM accepts no responsibility, and denies any liability whatsoever, to any party that uses or relies on this drawing without AECOM's express written consent. Do not scale this document. All measurements must be obtained from the stated dimensions.